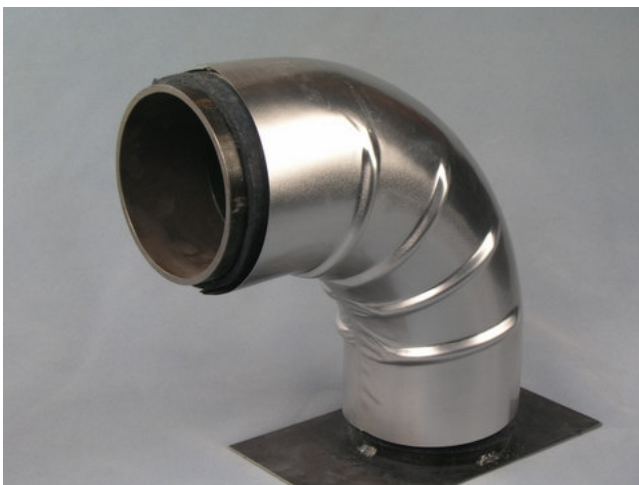




# WeatherJacs™

Pressed Aluminum Jackets

Exclusively for **aspen** aerogels Fitting Covers



- **Aspen Aerogel Specific**

Sproule AA WeatherJacs™ are exclusively pressed for Aspen Aerogel Fitting Covers. Sproule AA WeatherJacs™ are built to fit 'like a glove' with exact centerline radius and overlap for each size.

- **Patented Weather Tight System**

Water is the enemy to any insulation system. Patented inside and outside beads prevent water from entering the insulation system. See diagram on reverse side.

- **Precision Formed**

Sproule AA WeatherJacs™ are precision-formed in a state of the art, computer controlled hydraulic press.

- **Moisture Barrier**

A moisture barrier is applied to the interior of all AA WeatherJacs™ for resistance to electrolyte decomposition

- **Corrosion Protection**

A clear acrylic coating is applied to the exterior of all AA WeatherJacs™

- **Available Sizes**

Sproule AA WeatherJacs™ are available in sizes from 1" through 36" IPS and thicknesses from 6mm through 48mm.

- **Guaranteed Fit**

Sproule AA WeatherJacs™ are guaranteed to fit when used in conjunction with Sproule CNC Precision Cut, Aspen Aerogel Fitting Covers.

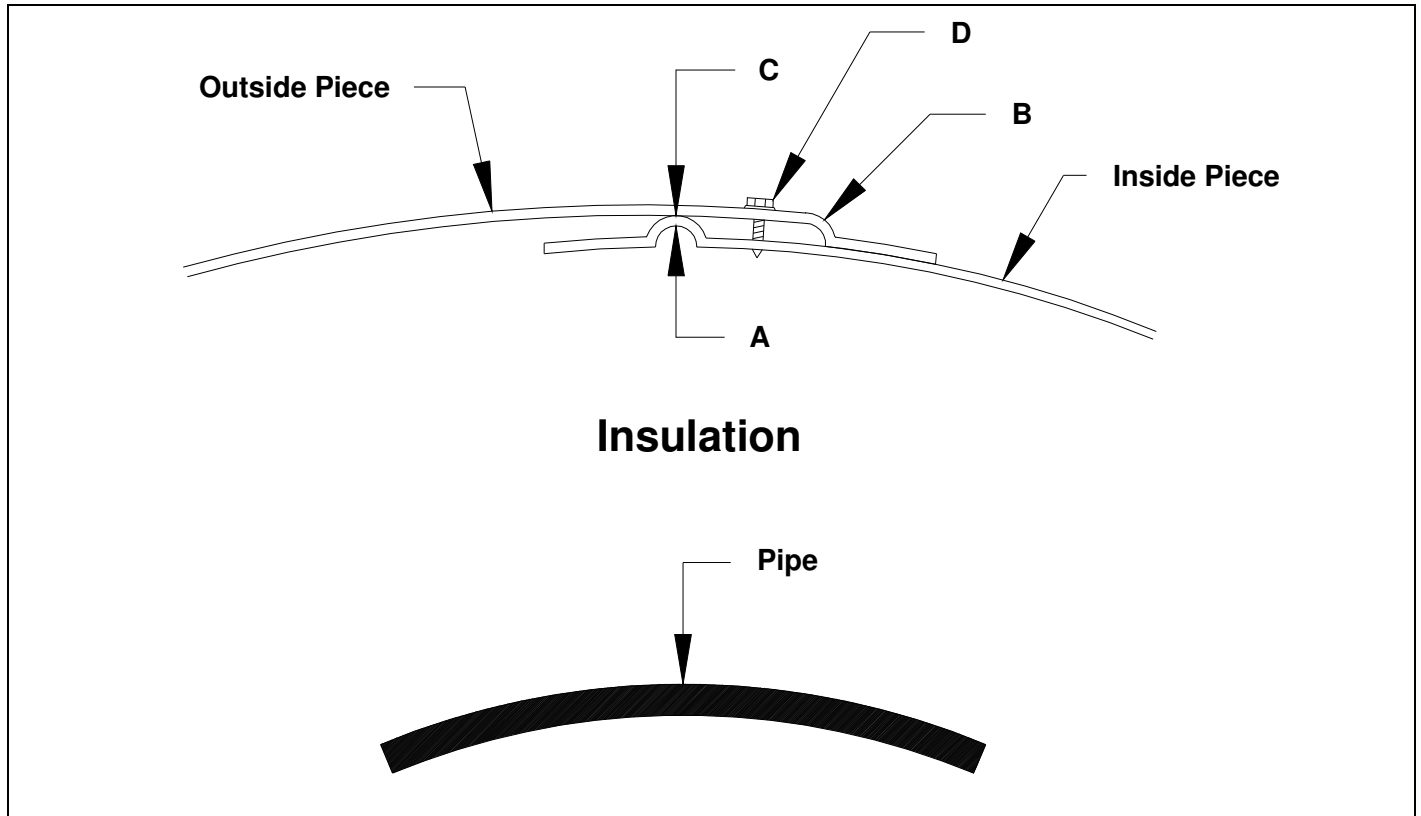
- **Made in the U.S.A.**

All Sproule AA WeatherJacs™ are pressed at our Devault, Pennsylvania Facility.

- **[www.sproule-mfg.com](http://www.sproule-mfg.com)**

Along with our product catalog and technical data, users can view net pricing, availability, and order Sproule WeatherJacs™ online.

# Sproule Mfg. Co., Inc. WeatherJac™ Technical Data Sheet



**AA WeatherJac™ Application Instructions:** Sproule WeatherJac™ use 'inside' and 'outside' pieces which have a patented (US Patent #6382260) closure system to keep water from getting into the insulation system. The inside piece has a pressed ridge. (See Figure – A) The outside piece has a pressed offset. (See Figure – B) Place one inside and one outside piece over the thermal insulation and properly tension the pieces with equal overlap on each side. After tensioning the pieces, place stainless steel sheet metal screws\* (See Figure – D) between the inside ridge (A) and outside offset (B). Ideally, sheet metal screws should be placed on 3" centers starting in the middle of the jacket working outwards.

As the screws are being installed, the outside piece will be pulled down tightly over the ridge (A) of the inside piece forming a seal. (See Figure – C) This seal will direct any water attempting to enter the insulation system down the ridge and out the bottom of the WeatherJac™ that overlaps the pipe jacketing. \*On cold systems, replace the stainless steel sheet metal screws with ½" stainless steel bands (Contact factory for details.)

**AA WeatherJac™ Technical Specifications:** Sproule Mfg. Co., Inc. AA WeatherJac™ are precision formed pressed aluminum fitting covers utilizing .024", Type 1100 Aluminum Alloy with an acrylic coating applied to each side before forming. Sproule AA WeatherJac™ are pressed with both an Inside and Outside half.

**AA WeatherJac™ Available Sizes:** Sproule Mfg. Co., Inc. AA WeatherJac™ are available as Long Radius 90° & 45° elbows and Short Radius 90° & 45° elbows. Available pipe sizes range from 1" to 36" IPS and thickness is available from 6mm to 48mm thick. Sproule Mfg. can accommodate electric and steam tracers from 1" to 3". Please contact the factory at 1-888-877-7685 with the insulation's Outside Diameter (OD) and pipe's Center Line Radius (CL). The Sproule Mfg. staff will be more than willing to convert your traced sizes into a standard AA WeatherJac™ size. **Some sizes may not be immediately available. Please call the factory at 1-888-877-7685, or visit [www.sproule-mfg.com](http://www.sproule-mfg.com) for a complete list of AA WeatherJac™ sizes currently available.**

The information herein is accurate and reliable to the best of Sproule Mfg. Co., Inc.'s knowledge. But, because Sproule Mfg. Co., Inc. has no control over our products once they leave our plant, no representation or warranty, expressed or implied, either as to Merchantability or Fitness for a particular purpose is made as to the performance or results of an installation containing our product which extend the description on the face hereof. If the products otherwise fail to conform to the representations made herein, through no fault of the purchaser, purchaser's exclusive remedy and Sproule Mfg. Co., Inc.'s sole liability, shall at Sproule Mfg. Co., Inc.'s option, be the repair or replacement of the nonconforming products or parts thereof, F.O.B. our nearest shipping point. The warranty expires one year from date of purchase. In no event shall Sproule Mfg. Co., Inc. be responsible or liable for any incidental, special or consequential damages which might result from product failure.

**Sproule Mfg. Co., Inc. ~ 3239 Phoenixville Pike ~ Devault, PA 19432  
(888) 877-7685 ~ Fax: (610) 647-7146 ~ [www.sproule-mfg.com](http://www.sproule-mfg.com)**